

THE NEXT CHAPTER 2023 UPDATE

Visit: ChristChurchUSA.org/TheNextChapter

[f](#) [i](#) [t](#) [d](#) @ChristChurchUSA



The CARE Center Lobby

PROJECT UPDATE

In January 2023, Christ Church launched—*The Next Chapter*—a bold, two-year movement designed to expand our care for the community through a comprehensive approach.

This Movement will take approximately four years to be fully realized. The major initiative is The CARE Center—an extensive array of in-person and remote programs designed to break systemic poverty and battle social injustices. To combat food insecurity, there will be a mobile food pantry serving the broader communities where our church has a campus and beyond. The CARE Center will also have a 123,000-square-foot physical presence at our Rockaway Campus.

It will take time and many miracles to raise the projected \$30 million capital through grant funding and congregational gifts. To renovate the building earmarked for this project, there are many steps involved—from concept (architect, engineers, etc.) to approvals (local/state government) to construction (funding, contractors, etc.). We ask for your patience, prayers and continued generosity so *The Next Chapter* can bring the words of Jesus (Matthew 25:35-36) to life in our region.

FINANCIAL UPDATE

Real CARE is generosity in action!

The Next Chapter Financial Summary	
Total Commitments	\$3,562,513
Monies Collected as of March 17, 2023	
Giving from Donors with Commitments	\$336,579
Giving from Donors without Commitments	\$123,798
Total Giving for The Next Chapter	\$460,378

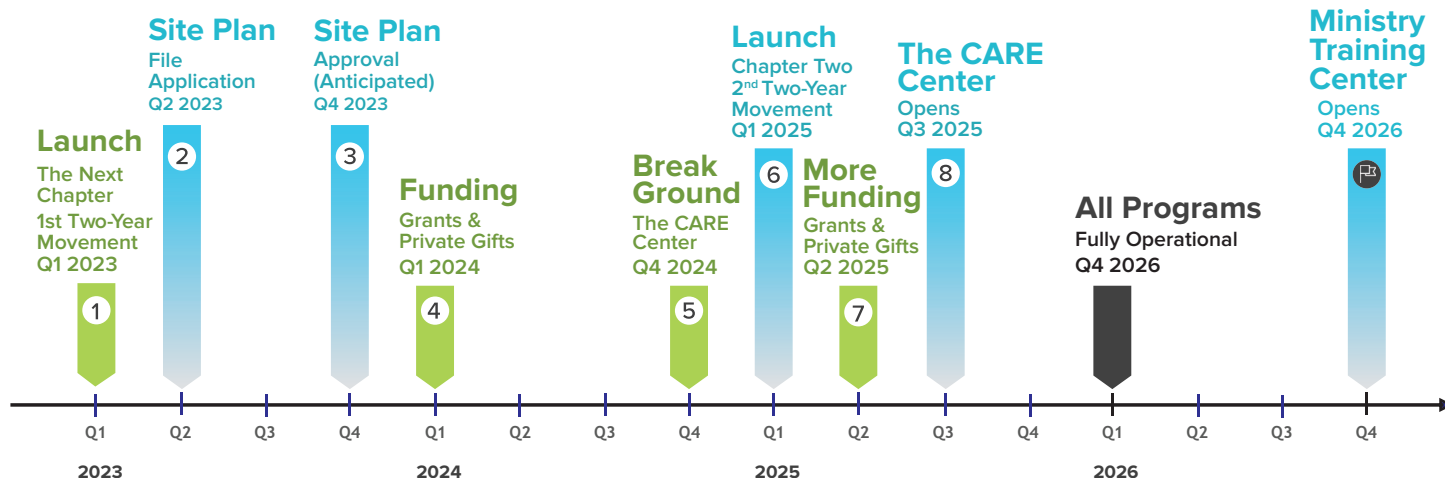
Thank you for demonstrating exceptional faith towards God's work.

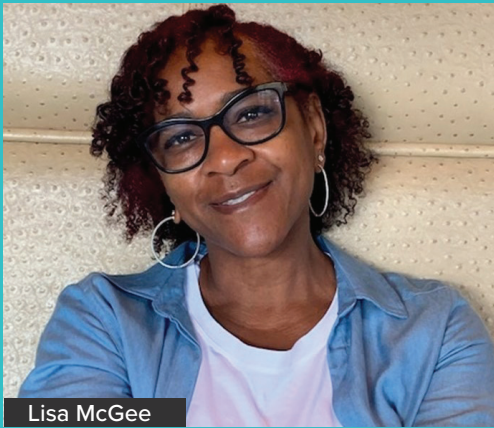
There's still time to **JOIN THE MOVEMENT!**



PROJECT TIMELINE

Please be aware that this timeline may change due to variables outside of our control.





Lisa McGee

IMPACT STORIES

Getting to opening day of The CARE Center is only the beginning. The thought of sustainability beyond revenue generators must be factored into the economic realities of a project with this size and scope. Plus, its operational future must be considered in the planning stages. Enter Lisa McGee, MBA, CPA, who heads up The Legacy Group—a ministry of Christ Church. McGee is leading a small team of professional services specialists in designing *Legacy Giving*—a planned giving program.

Slated to launch in September 2023 through a seminar, *Legacy Giving* will provide practical education on how to provide a planned gift from a source other than your regular income. Whether through a will, contract or trust, a planned gift can take the form of an inheritance gift from your estate, a gift of property or a more complex giving arrangement, like a charitable gift annuity or charitable remainder trust.

The power of a Planned Giving Program is your willingness to plan for the church that you love to continue its ministry *before* or *after* you slip into the arms of Jesus. Please consider how your planned gift would accelerate the ministry of Christ Church and continue your legacy because of your thoughtfulness and generosity.

Learn more about The Legacy Group by visiting: ChristChurchUSA.org/LegacyGroup.



Through challenging times of grief, loss or any overwhelming experience, Support Groups can be instrumental to your healing process.

IMPACT STORIES

Sam and Jessica were struggling to keep it together. They had just lost their 3-month-old baby to Sudden Infant Death Syndrome (SIDS), and were troubled with questions like: “Where can we go for help? Is there someone that can provide care without analyzing, judging or criticizing us?”

Then a neighbor told them about the support groups offered at Christ Church, which will be scaled through The CARE Center. After some hesitancy, the couple discovered GriefShare and took a leap of faith. The next week they began their journey of healing.

After several weeks, the couple shared, “From the moment the first group meeting began we were overwhelmed by how the group facilitators treated us with genuine warmth, dignity and unconditional acceptance. Their compassionate care created the environment needed for each person in the group to safely share their journey through grief. It wasn’t easy, and through a flood of tears we were able to open our hearts more and more each week. We met and shared from the depth of our pain toward the process of healing.”

Are you experiencing a painful situation in your life that’s more than you can handle alone? Explore the many virtual or in-person support groups offered at Christ Church. Each group is held in a safe environment with your dignity in mind. And with people who *get it* and who *get you*. Learn more about our support groups by visiting: ChristChurchUSA.org/CareGroups.

PARTNERSHIPS & COLLABORATION

Since the problems of injustice and meeting felt needs are community-wide issues, the solutions are also found in forming strategic community partnerships. Recently, we formed a partnership with a strong grant-writing agency to do just that. This agency has been successful in securing over \$1 billion dollars for past projects. Our prayer is that God will use them to help us secure the needed grant funding for The CARE Center.