

THE NEXT CHAPTER 2023 UPDATE

Visit: ChristChurchUSA.org/TheNextChapter

[f](#) [@](#) [@ChristChurchUSA](#)

The Next Chapter

Expanding our CARE for the Community

- The CARE Center
- Center for RACIAL RECONCILIATION
- Vibrant Multisite Church
- Ministry Training Center

PROJECT UPDATE

In January 2023, our church began the Next Chapter—a bold, four-year movement to expand our care for the community. The main focus is The CARE Center, a 123,000–square feet space hosting some 20 justice-oriented in-house and virtual programs such as the Legal Clinic, Food Pantry, Clothing Thrift Shop and Multisensory Suite.

As we pursue the funding for this \$30 million project through private and government grants, congregational gifts and partnerships, we’re actively taking all necessary steps. Two of these steps include obtaining site plan approval and addressing asbestos removal from Building One, which will house The CARE Center. The site plan application will be submitted this month (September 2023) to Rockaway Township. The review process, involving architectural, engineering, traffic study assessments and programmatic evaluations, will span around 6-7 months of public meetings. While we’ve received an unofficial positive response from important decision-makers, we must still complete the procedural legal process.

Back in the 1970s, asbestos was commonly used for insulation and fireproofing in commercial buildings. However, due to its health hazards, proper remediation became essential. Thankfully, Building One is currently vacant. This fall, a licensed commercial asbestos remediation company will take about 8-10 weeks to safely remove floor tiles and asbestos insulation around pipes. Our aim is to have a fully certified asbestos-free building well before the site plan approval is received. Please keep our project in prayer as we seek to expand our care and influence in the broader culture for Christ.

FINANCIAL UPDATE

Real CARE is generosity in action!

| The Next Chapter Financial Summary | |
|--|-------------|
| Total Commitments | \$3,604,854 |
| Total Collected December 2022 at Launch | \$205,569 |
| Giving from Donors with Commitments | \$520,389 |
| Giving from Donors without Commitments | \$233,508 |
| Total Collected in 2023 as of September 1 | \$753,897 |
| Grand Total Giving for <i>The Next Chapter</i> | \$959,466 |

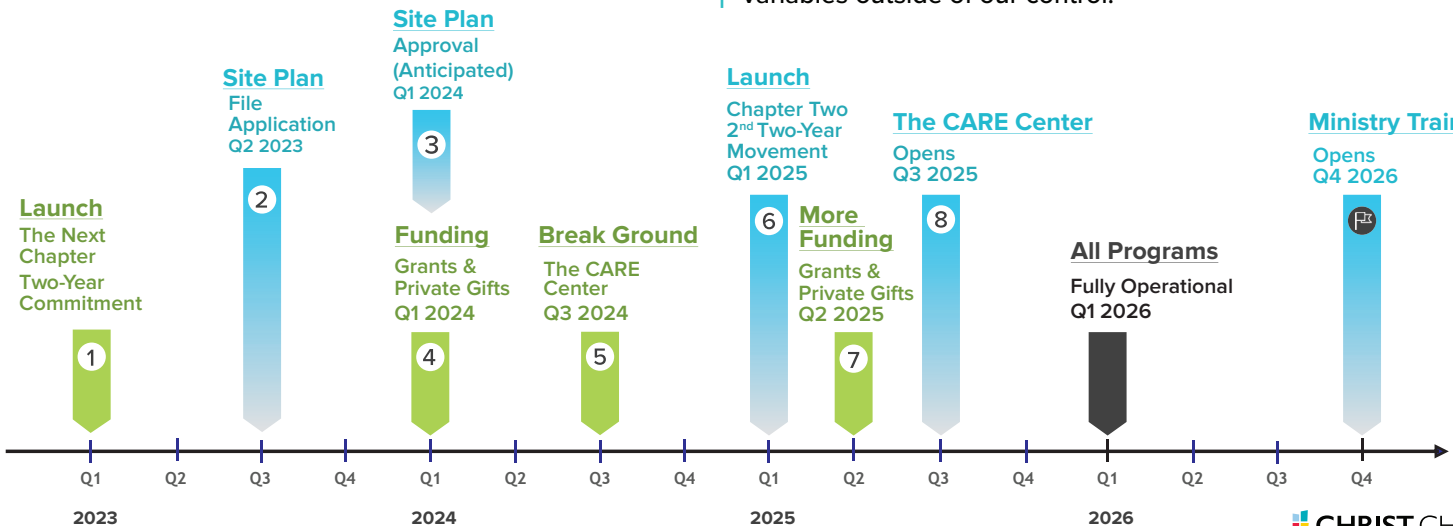
We are grateful for your generosity and faithfulness as *The Next Chapter* brings the words of Jesus (Matthew 25:35-36) to life in our region.



There’s still time to
JOIN THE MOVEMENT!

PROJECT TIMELINE

Please be aware that this timeline may change due to variables outside of our control.



IMPACT STORIES

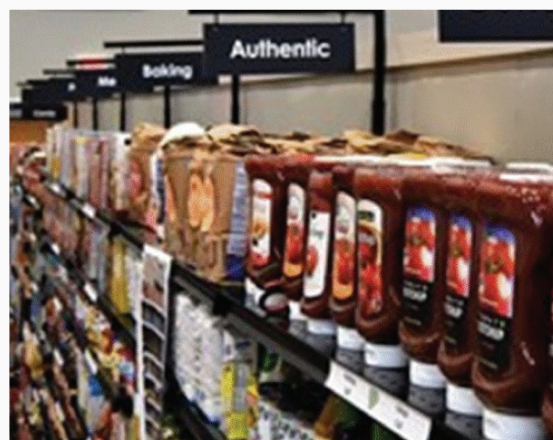
Allow us to introduce Ophelia and Collin Crawford. Formerly neighbors in Guyana, they both separately immigrated to the United States. Collin initially moved to Texas but relocated to New Jersey in 2020 due to work changes. He started attending our Rockaway Campus after an invitation from a member. The impactful sermons resonated deeply with him, and when Ophelia joined him in the States, he extended the invitation to her as well. Their journey also included getting married last year, adding to the warmth of their story.

Collin's unpredictable employment situation led to a struggle with food insecurity for him and Ophelia. As Ophelia browsed the Internet one day, she began exploring our website, and to her astonishment and delight, she uncovered a hidden gem: our Food Pantry outreach, aptly named **Food for Hope**. Fueled by unwavering faith and the belief that God would make a way to feed her family, Ophelia's heart brimmed with joy when the church provided them with thoughtfully packed bags of nourishing food. This act of care and compassion not only touched their family but also extended to Ophelia's mother-in-law, who lived nearby.

Their growing faith at Christ Church inspired them to invite a close friend. With open heart, the friend found herself at the altar one Sunday, fervently praying for her marriage that had endured a four-month separation. Miraculously, not much time passed before the husband traveled from Guyana to join his wife. Together, they stepped into Christ Church and approached the altar for their own heartfelt prayer. Ophelia joyfully shared their testimony of reconciliation, a testament to the transformative power of faith and unity.

In Central and Northern New Jersey, the challenge of food insecurity weighs heavily on the hearts of individuals and families. This challenge has been amplified by a recent reduction in SNAP (Supplemental Nutrition Assistance Program) Emergency Allotment benefits, coupled with rising inflation rates and reports of spoiled foods being distributed by some food banks. However, our Food for Hope initiative isn't limited to a large annual event that garners attention in November. It has evolved into an essential lifeline for many families facing hardship, including stories like Collin and Ophelia's, which inspire us all.

Prepare to be inspired as Collin's path to citizenship and Ophelia's green card process unfolds. Stay tuned for an upcoming video update over the next few months concerning their Impact Story. Learn more about our Food Pantry by visiting: ChristChurchUSA.org/FoodPantry.



PARTNERSHIPS & COLLABORATION



The CARE Center of New Jersey is in the early stages of launching its legal clinic. Join the Movement! We're seeking to connect with attorneys, law students and social workers interested in pro bono opportunities as a part of its Legal Clinic. The social justice needs facing our local community are great, but the tools needed to confront them are within reach if we strive for them!

To learn more about the vision and how you can be a part of it, scan the QR Code and register for a brief informational session on **Sunday, October 1, 2023**.

[Scan here to register for an info session!](#)

